



EXHIBITS

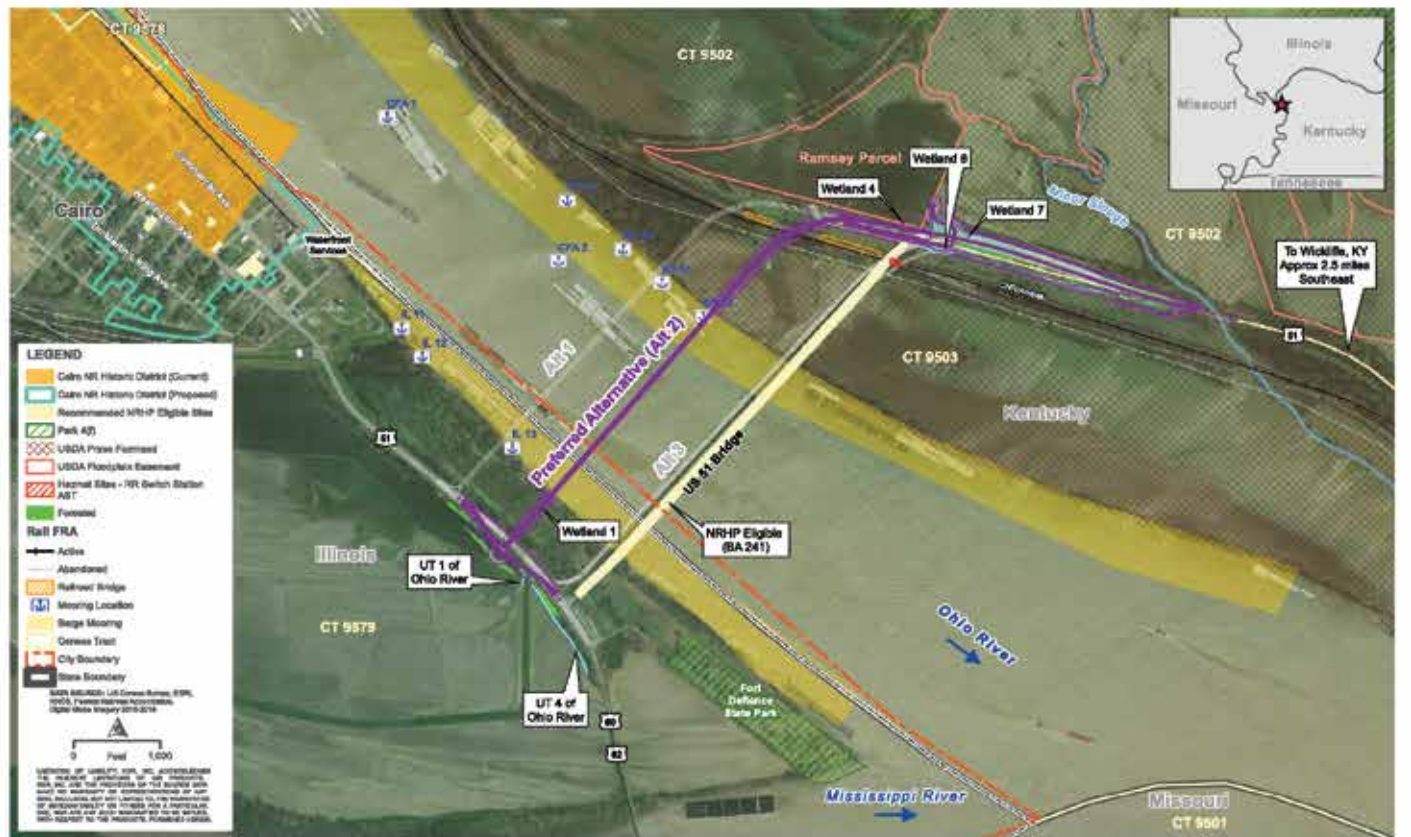


- LEGEND**
- ★ Existing US 51 Ohio River Bridge Crossing
 - Preferred Alternative (Alt 2)
 - City / Amtrak Rail
 - City Boundary
 - County Boundary
 - State Boundary
- 0 1 Miles



US 51 BRIDGE REPLACEMENT

EXHIBIT 1: PROJECT LOCATION
 US 51 BRIDGE REPLACEMENT
 KYTC ITEM NO. 01-1143.00
 CAIRO, IL



- LEGEND**
- Cairo NH Historic District (Current)
 - Cairo NH Historic District (Proposed)
 - Recommended NHP Eligible Sites
 - Park A(1)
 - USDA Private Forestland
 - USDA Private Forestland
 - Hazardous Sites - NRE Switch Station
 - NRE
 - Forested
 - Rail FRA
 - Active
 - Abandoned
 - Railroad Bridge
 - Missing Location
 - Bridge Missing
 - Census Tract
 - City Boundary
 - State Boundary
- Scale: 1" = 1,000 Feet



To Wickliffe, KY
 Approx. 2.5 miles
 Southeast



EXHIBIT 2: PREFERRED ALTERNATIVE (ALT 2)
 US 51 BRIDGE REPLACEMENT
 KYTC ITEM NO. 01-1143.00
 CAIRO, IL