

**US 51 BRIDGE REPLACEMENT OVER THE OHIO RIVER  
Citizens Advisory / Environmental Justice Group Meeting #1  
Meeting Record #1**

**November 14<sup>th</sup>, 5:30 PM to 8:00 PM (CST)**

**Ft. Jefferson Welcome Center, Wickliffe, KY**



CAG/EJ Attendees

Name	Representing
<b>Stacey Courtney</b>	Planning and Community Development Division
<b>Angela Van Cleve</b>	Proxy for Ballard County Judge Executive Todd Cooper
<b>Carla Hildebrand</b>	Wickliffe Mounds Park Manager
<b>David Phillips</b>	City of Wickliffe Mayor
<b>Thomas Simpson</b>	City of Cairo Mayor
<b>Tiffany George</b>	Southern Five Regional Planning District
<b>Dr. Andrea Evers</b>	Cairo Unit School District
<b>Rodney Hill</b>	Fairview Baptist Church AND Proxy for Hannah Chretien representing Ballard County Chamber of Commerce and Ballard County Economic & Industrial Development
<b>Adam Thomas</b>	Proxy for Hannah Miller representing Illinois Farm Bureau
<b>Jim Lefevre</b>	Ballard County Health Center
<b>Brian DeRousse</b>	Hillbilly BBQ Business Owner
<b>Janet Hunt</b>	Property Owner
<b>Shelby Adkinson</b>	Shawnee College AND proxy for Reverend Jimmy Ellis representing First Missionary Baptist Church
<b>Vernon Stubblefield</b>	Community Leader
<b>Shane Irby</b>	Proxy for Allen Tappan representing Waterfront Services Co.
<b>Steve Tarver</b>	Community Leader

Presenters

Kyle Poat, KYTC, Chief District Engineer  
 Aaron Stover, Michael Baker International, Project Manager  
 John Mettill, Michael Baker International, Environmental Lead  
 Brad Gregory, HMB, Roadway

Project Attendees

Tim Layson, KYTC	Shannon Provance, HDR
Keith Todd, KYTC	Jeff Schaefer, HDR
Carrie Nelsen, IDOT	Rebecca Colvin, HDR
Charles Stein, IDOT	Matt Sipes, HMB
Patty Dunaway, Michael Baker International	Johnny Little, eLittle Communications
Anna Klenke, Michael Baker International	



Kyle Poat welcomed the members of the Citizens Advisory and Environmental Justice Group (CAG/EJ) and introduced Aaron Stover and John Mettille. Aaron and John introduced the project team members and presented on the following topics.

- **Why are we here?** (Presented by Aaron Stover)
- **Why are you here?** (Presented by John Mettille)
- **Where are we in the project development process?** (Presented by John Mettille)
- **How did we get here?** (Presented by Aaron Stover and John Mettille)
- **What have we been up to?** (Presented by John Mettille)
- **Roadway Alignments and Typical Sections** (Presented by Brad Gregory)

Activities and discussions that were integrated into the presentation and had by the CAG/EJ members are described below. In addition, activity sheets were handed in by attendees and are attached.

**Community Context Activity:** The following questions were asked as part of the activity.

- *What are the locations of important community activity areas and focal points?*
- *Where do people in the community obtain important services (healthcare, education, etc.)?*
- *Describe your ideal vision of the Cairo/Wickliffe area in 20 years. How could transportation help make your vision a reality?*
- *How might changes to the bridge negatively or positively impact you, your family and the community?*

**Discussion for the Community Context Activity:**

- The following areas of importance should be considered
  - Kentucky: Jefferson Park, Wickliffe Mounds, Courthouse, Fort Jefferson, churches
  - Illinois: Magnolia Manor, Horseshoe Lake, Fort Defiance Park, Cairo High School, Thebes Courthouse, St. Mary's Park, Public Library, Custom House, GEM theatre, Riverlore, and churches
- Tourism Considerations
  - 50% of Missouri residents that visit the Land Between the Lakes in Western Kentucky travel over the US 51 Bridge.
- Groceries and Services
  - The bridge provides Cairo access to groceries and other necessary shopping.
  - Local medical clinics and pharmacies are only available on the Kentucky side of the river. Cairo residents must go to Cape Girardeau, MO or Paducah, KY for healthcare; older residents are reluctant to cross the narrow bridge to get to healthcare. There is also the Community Health & Emergency Services. Cairo MegaClinic.
- Employment Considerations/Cross-River Reliance
  - Local boating companies



- The bridge provides a vital link for the Phoenix Paper Mill and Pilgrim's Pride chicken factory.
- 25% of the Cairo School work force lives in Kentucky.
- Businesses on both sides of the river receive a large amount of business from the other side:
  - Liquor stores in Cairo
  - BBQ and other restaurants in Wickliffe
- Grain and other farm goods are shipped across river
- Education opportunities exist cross river: Shawnee Extension in Cairo or Paducah, KY for continued education opportunities.
- The following items are part of the communities' vision for the future:
  - Create water tourism/develop a strong river industry including the Riverport
  - Have solar or wind farms
  - The bridge should be wider and connected to the interstate so that the towns are not bypassed
  - The community would like to see an increase in population, affordable housing, commercial businesses, and employment opportunities.
  - The community would like Cairo to have increased economic development and be better connected with nearby cities.
  - The community would like Wickliffe to be more than just a pass through on the way to other destinations.
- The following are ways the bridge project might negatively or positively impact the community
  - The community considers any closure periods or traffic impacts during construction as a negative but the added jobs from a construction project as a positive
  - A new bridge would have a positive impact by improving access and increasing safety to users.
  - The community stressed that project team communication is a key point so that it is known when there will be bridge closures or reduced lanes. The community would see making any closure periods of the bridge during the summer when school is not in session.
  - A negative impact would be losing prime farming income due to the loss of property or impacts to property.
  - A negative impact could occur based on what happens to the old bridge and associated property.

**“What has Changed Since 2014?” Activity:** The following questions were asked as part of the activity.

- *Typical jobs of community members? Has the economy changed over time?*
- *Typical commuting patterns for people working in the community? How have they changed over time?*
- *How has the bridge served you/your family and the community in the past versus now?*
- *Are you seeing expanding opportunities and does the project provide any additional opportunities?*

**Discussion for the “What has Changed Since 2014?” Activity:**

- The papermill in region has reopened
- There are two new river fisheries that deal with Asian Carp
- A four-state pact for riverport authority is being worked on

- The hemp industry is now present in the area
- Granaries are heavily using the bridge
- The two largest employers in Cairo are Waterfront Services and the River Bend Rice Seed Company
- Neither community (Wickliffe or Cairo) has a grocery store (food desert)
- There are an additional 150 trucks a day recently due to the Phoenix Paper Mill reopening
  - The paper mill is getting ready to construct a 200-million-dollar expansion and increase employment from 200 to 400 employees
- The CAG/EJ feels presented traffic projections are low for 2045 given the recent new industry.
- The CAG/EJ wants the project team to understand that when the Port Authority is constructed the bridge traffic will increase.
- Including a bike lane was mentioned
- Nearby US 60 having 4 lanes was mentioned and the desire to have a four-lane bridge.
- The communities are seeing a resurgence of jobs. Many individuals are employed on the opposite side of the river from their residence.
- The bridge has connected and linked families.
- The bridge has become a necessity and a huge part of daily life because there is nowhere to buy necessities in Cairo.
- Individuals from Cairo typically find work in Kentucky or Missouri.
- In summary the CAG/EJ feels like a lot of opportunities are coming

### **Purpose and Need Discussion/Reevaluation**

The group feels the current purpose and need statement and criteria are all still valid but would like to add support of the river industries in the area to the secondary goals list.

**Alignment Activity:** The following questions were asked as part of the activity.

- *Pros and Cons of the presented alignments?*
- *Pros and Cons of the presented typical sections?*
- *Do you have a preference of one alternative over another?*
- *What are your main concerns?*

### **Discussion for the Alignment Activity:**

- The CAG/EJ inquired what the design speed on the horizontal curves on the Kentucky approach will be. The project team informed them the current alignments would have curves that are designed for 50-55 mph. The curve not being as sharp would be a pro for any of the alignments.
- The group's preference was for alternative 3 (alignment closest to the current bridge). CAG/EJ members felt this might impact fleeting operations less and that it is in a familiar location. They believe it would be less expensive. It was also stated that whichever one is chosen should be the one that includes the shortest closure duration during construction. The con listed was for the details of the potential impacts to the Illinois side intersection.

- A statement was made that alternative 1 (farthest from the current bridge) would include more bridge and they did not give preference to this condition. This alternative is also getting closer to W.F.S. facilities and could disturb river fleeting operations. Other cons listed including impacts to the conservation easement, the close proximity to the railroad, and close proximity to the dry docks.
- The pros of alternative 1 would be the closer proximity to Cairo and the potential to be less disruptive to land owners.
- Alternative 2 pros included a curve that is not as sharp, additional room to negotiate the turn, reduced congestion on the Kentucky side, limited impacts to moorings, and providing a nice connection on the Illinois side.
- Alternative 2 cons included potential impacts to the fleeting operations, conservation easement impacts, and railroad impacts.
- The cheapest alternative should be considered if it will help the overall project cost and thus allow for a wider structure. It was recognized that even a 2-lane bridge could be much wider than the existing bridge.
- Two-lane typical section pros included cheaper costs, expanded shoulders from existing, and providing adequate capacity. Cons included not providing the opportunity for future expansion and growth of the community.
- Pros for the four-lane typical section included allowing for future growth, increased safety, a connection to the 4-lane US 60, and accommodating future riverport traffic. Cons for the four-lane typical section included the typical cost and having to transition to a two-lane road at the end.
- A con was listed with regards to having a roundabout for the semi traffic.
- Several concerns with regards to the construction schedule were listed – the bridge is wanted now.

The next CAG/EJ Meeting is tentatively scheduled for February but will be adjusted based on project progression. The CAG/EJ voted for the next meeting to take place on the Illinois side of the river.

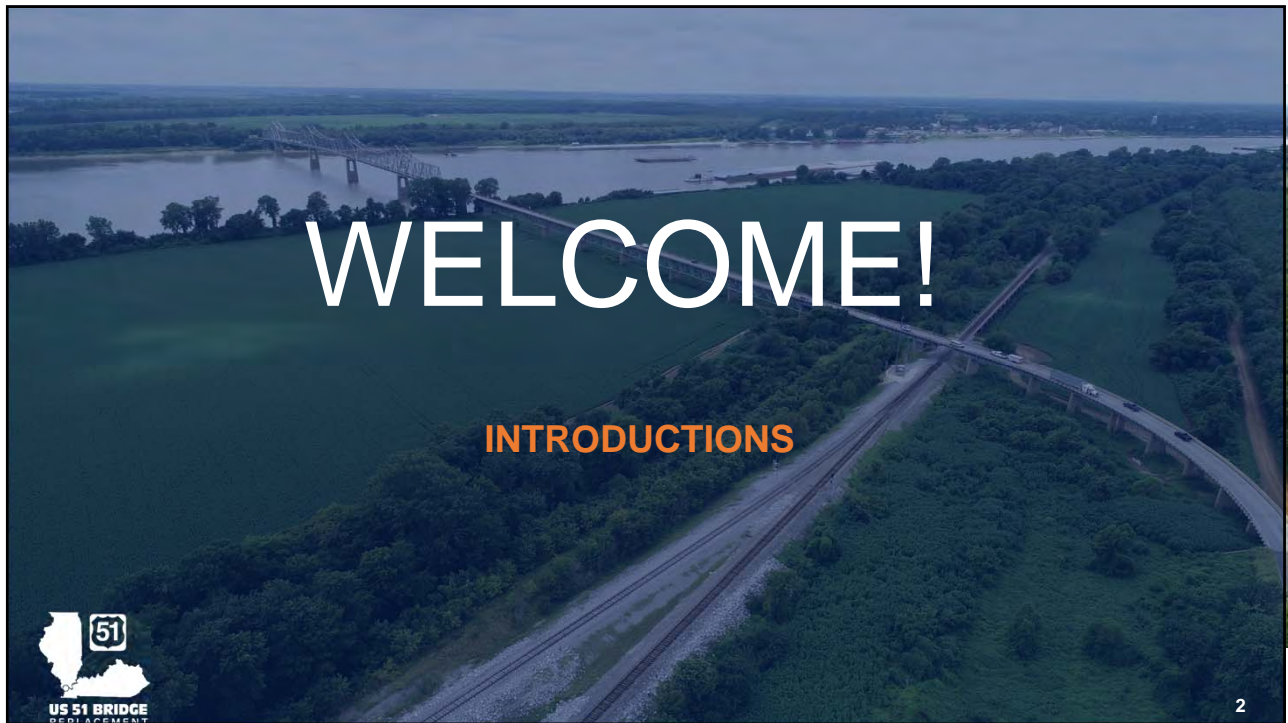
# **Appendix A**

## **Presentation**




**US 51 BRIDGE  
REPLACEMENT**

**Citizens Advisory and Environmental  
Justice Group Meeting 1** *November 14<sup>th</sup>, 2019*




**WELCOME!**

**INTRODUCTIONS**




2



## MEETING AGENDA

- ❑ Why Are We Here?
- ❑ Where Are We in the Project Development Process?
- ❑ How Did We Get Here?
- ❑ What Have We Been Up To?
- ❑ What Did We Hear From the Public?
- ❑ Roadway Alignments and Typical Sections
- ❑ Upcoming Meetings and Public Information

3




## MEETING CODE OF CONDUCT

- ❖ Be RESPECTFUL of others
- ❖ LISTEN to those speaking
- ❖ Do not INTERRUPT
- ❖ Be as CONCISE as possible
- ❖ Do not MONOPOLIZE meeting time
- ❖ Be ON TIME
- ❖ Meetings will BEGIN and END on time
- ❖ Be prepared to comply with TIME LIMITS

**ALL IDEAS HAVE VALUE**  
**ALL IDEAS WILL BE HEARD**

4







## WHY ARE WE HERE?

5



## BRIDGE FACTS

Constructed between 1936 and 1938

Deck was replaced in 1980; Rehabilitated in 1999

Longest cantilever truss in Kentucky

5,865 ft long (2380 ft truss spans)

Located within the New Madrid seismic zone

Bridge was designed before seismic design was required

Only vehicular bridge crossing of the Ohio River west of Paducah

6



## PROJECT GOALS

- Federally approved Categorical Exclusion Level 3 (CEL3) documentation
- A consensus between Cooperating Agencies, Stakeholders and the Public
- A bridge that is constructable
- A bridge that is affordable



## WHY ARE YOU HERE?

The purpose of the Citizens Advisory and Environmental Justice Group is to provide a direct line of communication between local community members and project development parties for the discussion of potential impacts to local businesses, low income and minority communities and valued resources in the area.



## ENVIRONMENTAL JUSTICE AND CITIZENS ADVISORY GROUP

A Citizen's Advisory Group is a group of people that consists of an accurate representation of the community and provides comments and advice to the project team.

Allows for focused involvement and input from citizens and attempts to achieve consensus on issues that affect the community.



- Environmental Justice is the fair treatment of all people regardless of race, religion, nationality or income.
- Fair treatment means no group of people is disproportionately affected by the development of the project.
- The group is able to voice their concerns about activities that may affect their environment and/or health.
- These concerns will be considered in the decision making process.


9

## GROUP OBJECTIVE

- Represent the local community
- Identify Public/Community concerns
- Prioritize these concerns
- Provide input on how to alleviate the concerns (Not a decision-making party)
- Disseminate information to the community




10



## WHO MAKES THE FINAL DECISION?

- Federal Highway Administration
- Kentucky Transportation Cabinet
- Illinois Department of Transportation
- With INPUT from:
  - Coordinating/Cooperating Agencies
  - Section 106 Consulting Parties
  - Citizens Advisory/ Environmental Justice Group
  - General Public
  - Technical Analysis

11




# QUESTIONS?

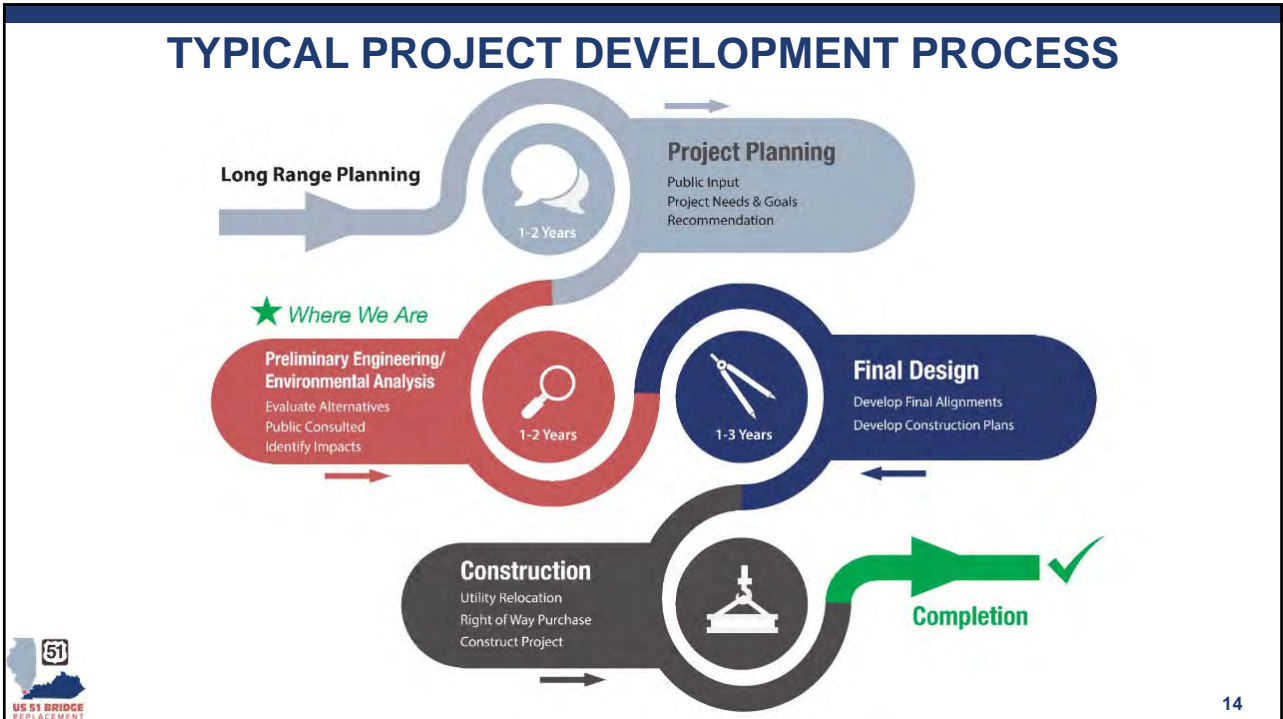
12



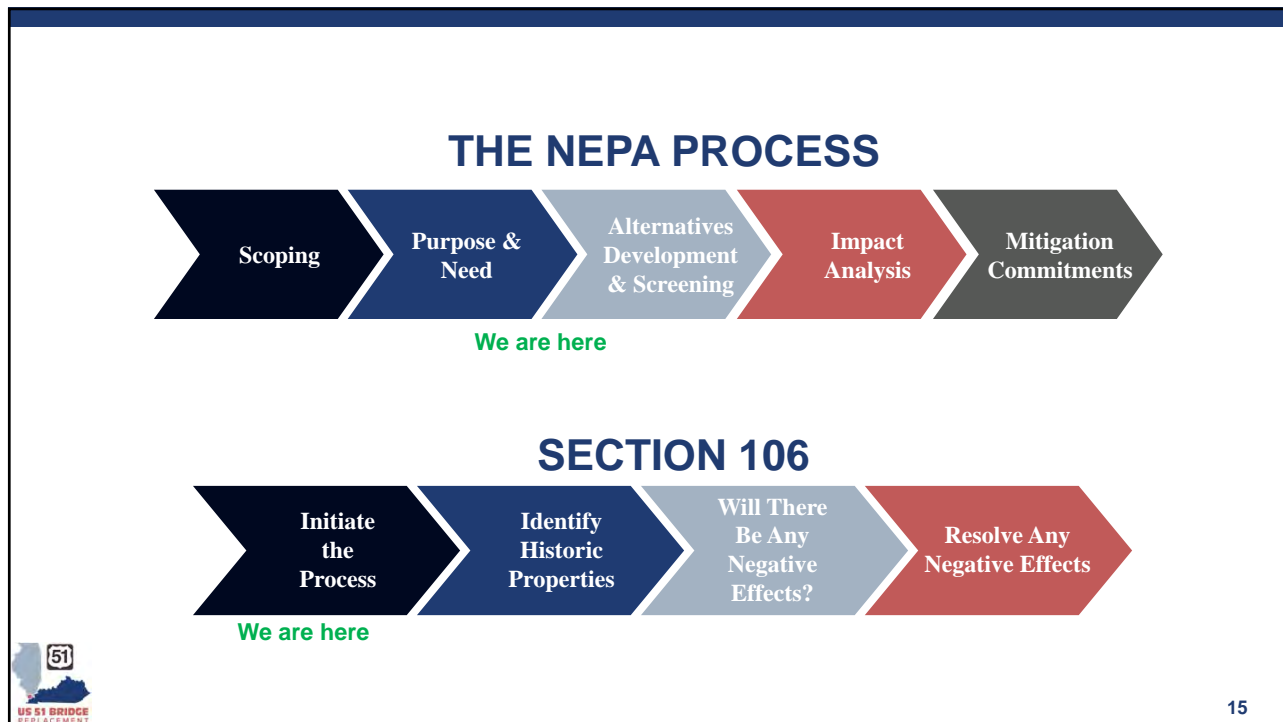


WHERE ARE WE IN THE PROJECT DEVELOPMENT PROCESS?

13



14



## WHAT IS NEPA?



**National Environmental Policy Act**


Process that determines and analyzes potential effects on the environment from federally funded actions

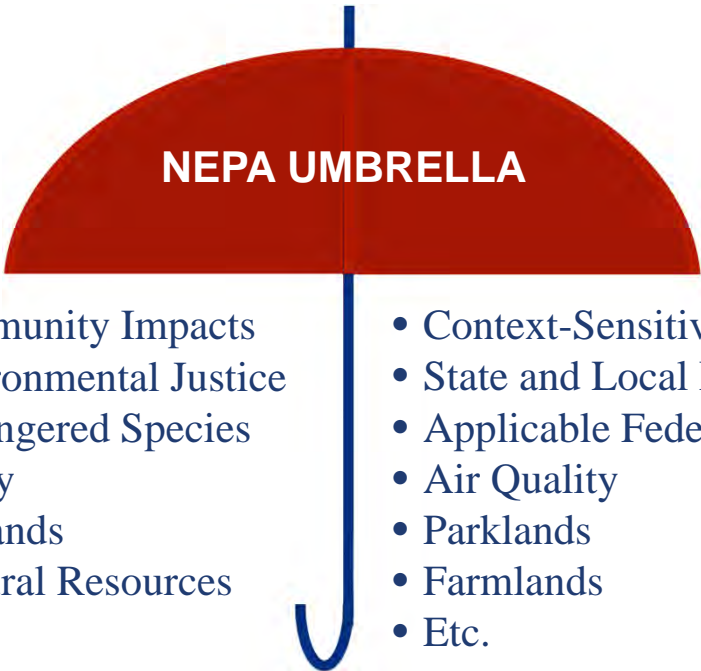
The environment is not just plants and animals, but includes the communities and economies contained within the area

Uses public input to help achieve positive project outcomes, and determine potential negative impacts to the community

All determinations, analyses and findings are fully disclosed to the public






16




**NEPA UMBRELLA**

- Community Impacts
- Environmental Justice
- Endangered Species
- Safety
- Wetlands
- Cultural Resources
- Context-Sensitive Solutions
- State and Local Laws
- Applicable Federal Laws
- Air Quality
- Parklands
- Farmlands
- Etc.




17



**WHAT IS SECTION 106?**

Part of the National Historic Preservation Act

Identifies Historic Properties and Cultural Resources that may be affected by new construction and how to minimize or resolve the effects



18

## HISTORIC QUALIFICATIONS

- Associated with significant events
- Associated with lives of significant persons
- Embodying distinctive characteristics
- Containing important prehistoric or historic information



19

## NATIONALLY REGISTERED HISTORIC PROPERTIES



### ALEXANDER COUNTY, IL

- Cairo Historic District
- Magnolia Manor
- Old Customhouse
- McClure, Thomas J. and Caroline House
- Chicago and Eastern Illinois Railroad Depot
- Thebes Courthouse
- Dogtooth Mounds and Village Site



### BALLARD COUNTY, KY

- Wickliffe Mounds
- Barlow House
- Juett, Dr. David Polk, Farmstead
- Lovelace, Andrew Jr., House
- Ballard County Courthouse
- Trimble House



20



## COMMUNITY CONTEXT ACTIVITY

- What are the locations of important community activity areas and focal points?
- Where do people in the community obtain important services (healthcare, education, etc.)?
- Describe your ideal vision of the Cairo/Wickliffe area in 20 years. How could transportation help make your vision a reality?
- How might changes to the bridge negatively or positively impact you, your family and the community?



## COMMUNITY CONTEXT DISCUSSION SUMMARY





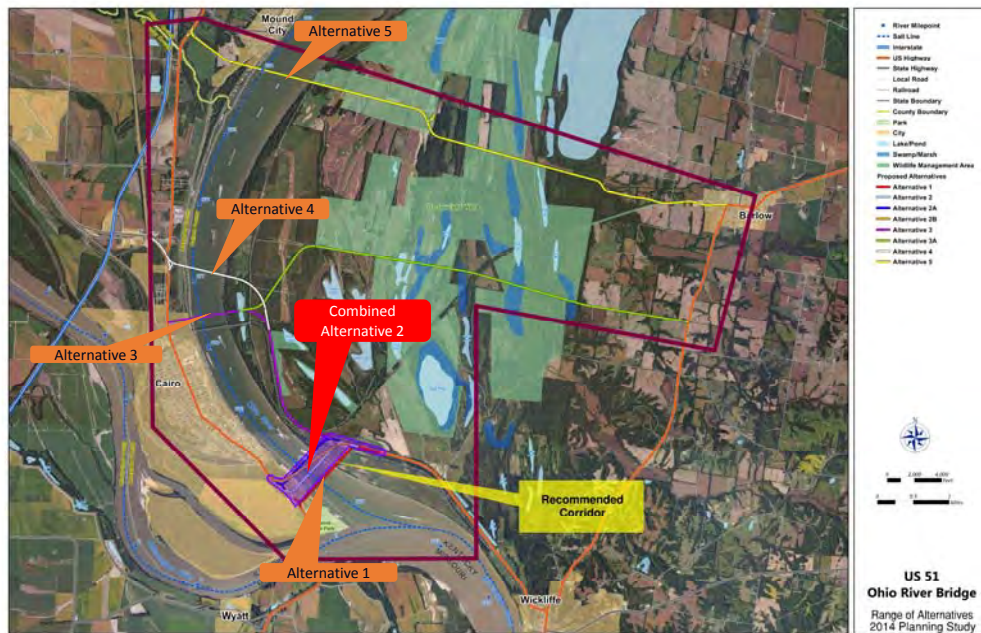
# PROJECT OVERVIEW

## 2013-14 Planning Study Conclusions

- Vital cross river link
- Minimize closures and lane restrictions
- Strong preference for the existing location
- Maintenance of Traffic during construction
- Accommodate farm equipment traffic



## 2014 PLANNING STUDY AREA



US 51  
Ohio River Bridge  
Range of Alternatives  
2014 Planning Study

## EVALUATION CRITERIA USED IN 2014 PLANNING STUDY

### Level 1: Evaluate how well each alternative meets the Purpose & Need.

- Improve river crossing (bridge deficiencies)
- Improve/maintain a cross-river link between Cairo and Wickliffe
- Address existing safety issues on the bridge and approaches



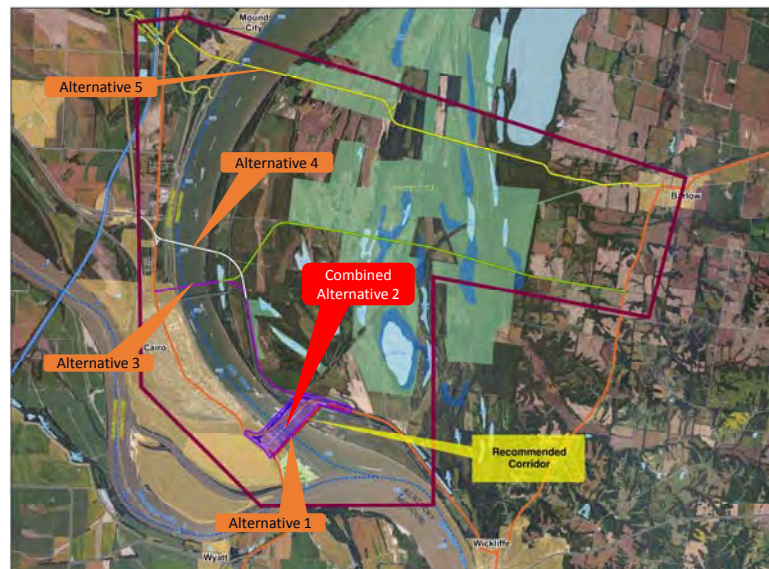
### Level 2: Evaluate how well each alternative addresses the other project goals.

- Satisfy U.S. Coast Guard requirements
- Support local freight routes
- Constructible solution
- Minimize costs
- Minimize disruption to Wickliffe and Cairo during construction
- Minimize impacts to:
  - Tourism
  - Human and Natural Environment
  - Historic Resources
- Support consistent travel time between Wickliffe and Cairo
- Decrease delay due to incidents on the bridge
- Connectivity to bicycle facilities

27

## ALTERNATIVE ANALYSIS

- No Build, Rehab and Alternative 5 do not meet the Purpose & Need
- Alternative 1 has a high complexity of construction and will have the bridge closed for an extended period of time (1-2 yrs)
- Alternatives 3 & 4 are costly; have significant acreage in Boatwright Wildlife refuge, 100 yr floodplains, and prime/statewide farmlands; as well as increased travel time between Cairo, IL and Wickliffe, KY with some residents having to relocate in Alternative 3



28

## RECOMMENDED ALTERNATIVE (FROM 2014 PLANNING STUDY)

### Combined Alternative 2

- Satisfies the project purpose.
- Maintains best cross-river connectivity.
- Minimizes construction complexity, maintenance costs, and user costs during construction while providing an estimated 75+ year service life.
- Best minimizes impacts to the human and natural environment of the alternatives considered.
- Best satisfies resource agency, local official, and public concerns.



29

# QUESTIONS?

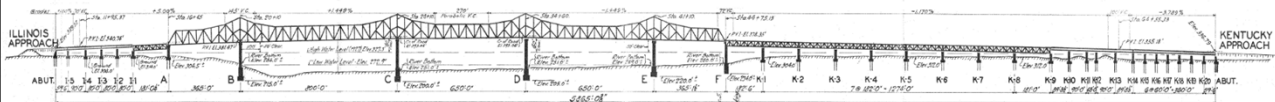


30



## WHAT HAVE WE BEEN UP TO?

## EXISTING BRIDGE CONDITIONS

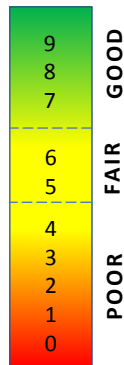


### Bridge Geometric Deficiencies

- Narrow 10 ft lanes
- Narrow 1'-3" shoulders
- Inadequate sight distance
- Sharp horizontal curve

### Proposed Design Criteria for New Bridge Alternative

- Designed to modern standards
- 900' or greater main span horizontal length
- 2 lanes with wider shoulders



National Bridge Inventory Inspection Item	2012 Condition Rating	2018 Condition Rating
Deck	6	5
Superstructure	6	5
Paint Condition	7	6
Substructure	6	5



## TRAFFIC PROJECTIONS

### Traffic Projections for the US 51 Ohio River Bridge:

HISTORIC TRAFFIC	AADT
2013 Traffic Count (KYTC)	5,350 vpd
2019 Current Year (Estimated)	5,500 vpd
TRAFFIC FORECAST	AADT
2025	5,600 vpd
2045	6,200 vpd

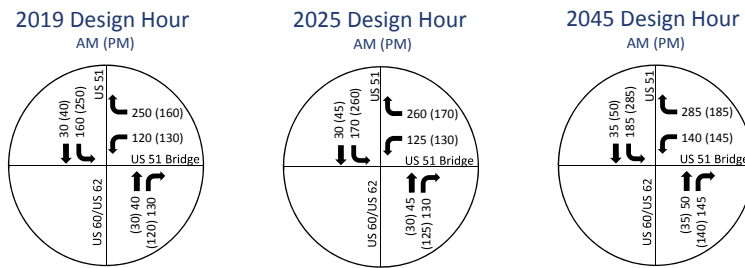
Notes: Future years forecast using 0.5% annual growth rate  
 AADT = Average annual daily traffic  
 vpd = Vehicles per day

- Approximately 35% of traffic using bridge is truck traffic
- Two Lane Bridge is Adequate



## TRAFFIC PROJECTIONS

### Traffic Projections for the US 51/US 60/US 62 Intersection:



Notes: Future years forecast using 0.5% annual growth rate



## SMALL GROUP ACTIVITY – WHAT HAS CHANGED SINCE 2014?

Typical jobs of community members? Has the economy changed over time?

Typical commuting patterns for people working in the community? How have they changed over time?

How has the bridge served you/your family and the community in the past versus now?

Are you seeing expanding opportunities and does the project provide any additional opportunities?



## WHAT HAS CHANGED SINCE 2014 DISCUSSION SUMMARY





## PURPOSE AND NEED ACTIVITY

### 2014 Purpose and Need

- Improve river crossing (bridge deficiencies)
- Improve/maintain a cross-river link between Cairo and Wickliffe
- Address existing safety issues on the bridge and approaches



37

## PURPOSE & NEED

The purpose of the US 51 Bridge Project is to improve cross river mobility between Wickliffe, Kentucky and Cairo, Illinois, by addressing the safety and reliability issues caused by the narrow lane widths, lack of shoulders and tight curve of the existing bridge and its approaches.

### Primary Purpose

- The purpose is a statement of the issue to be resolved, and the need provides data to support this statement. (What is the problem, and why is it a problem?)
- This statement is developed from a transportation planning study and refined throughout the project life as needed.
- The purpose and need statement is the foundation of the project and is used to evaluate potential solutions and alternatives.



### Secondary Goals

- Describes other issues that need to be resolved within the project not directly related to transportation.
- Examples of these issues might be supporting local freight routes, minimizing disruption to local communities, minimizing impacts to tourism, human and natural environment and historic resources, or connectivity to bicycle facilities.

38

## REVALIDATION OF PROJECT GOALS

Project goals will be considered in:

- Project decisions
- Alternative development
- The range of alternatives developed
- Screening criteria
- Alternative comparison and evaluation



### 2014 Secondary Goals

- Satisfy U.S. Coast Guard requirements
- Support local freight routes
- Constructible solution
- Minimize costs
- Minimize disruption to Wickliffe and Cairo during construction
- Minimize impacts to:
  - Tourism
  - Human and Natural Environment
  - Historic Resources
- Support consistent travel time between Wickliffe and Cairo
- Decrease delay due to incidents on the bridge
- Connectivity to bicycle facilities

39



## PURPOSE AND NEED DISCUSSION SUMMARY

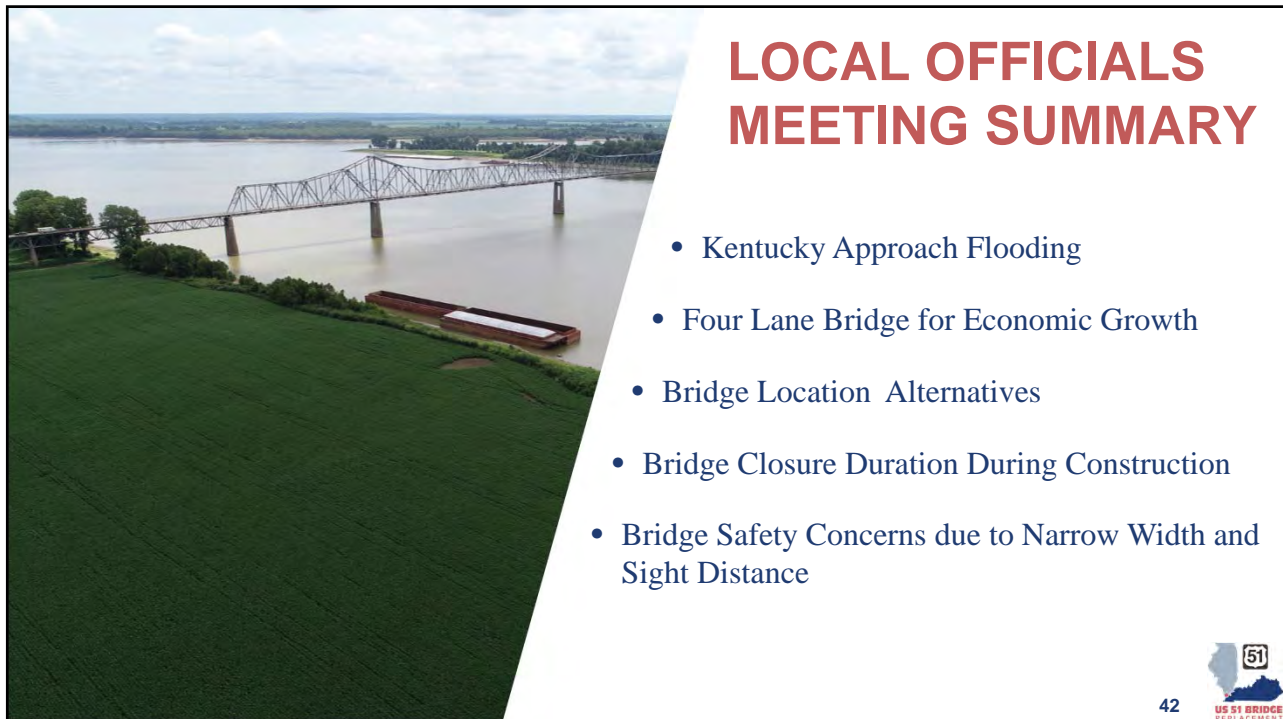


40



## WHAT DID WE HEAR FROM THE PUBLIC?

41



## LOCAL OFFICIALS MEETING SUMMARY

- Kentucky Approach Flooding
- Four Lane Bridge for Economic Growth
- Bridge Location Alternatives
- Bridge Closure Duration During Construction
- Bridge Safety Concerns due to Narrow Width and Sight Distance

42





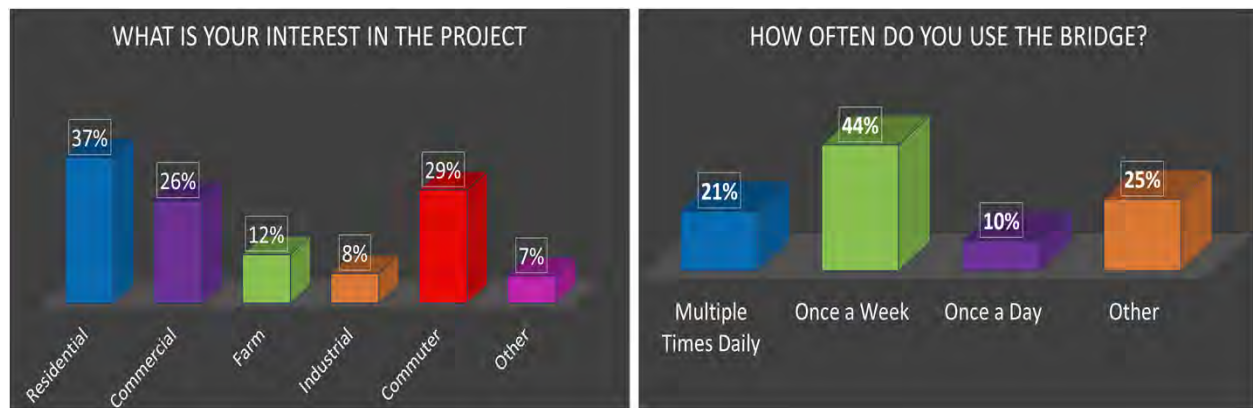
## PUBLIC MEETINGS SUMMARY

- Concern with the safety of the current bridge including narrow lanes and dangerous curves
- Desire to keep the bridge at or near the current location
- Concern about the bridge being closed due to flooding and/or construction
- Higher road elevation to prevent flooding
- Desire for a four-lane bridge
- A fear that this project would not be undertaken or completed at all
- Approximately 240 people attended the public meetings (90 at Cairo; 150 at Wickliffe)

43



## SURVEY SUMMARY

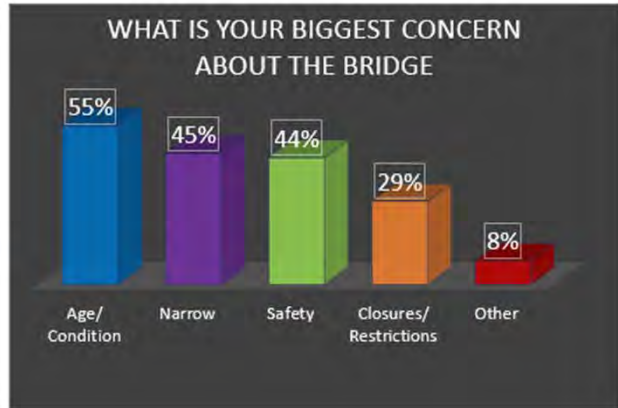
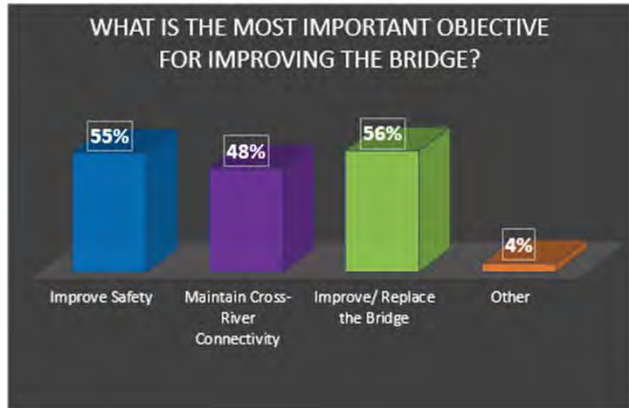


A total of 73 surveys were returned. 19 from the Wickliffe meeting, 50 from the Cairo meeting, and 4 from the Local Officials meeting.



44

## SURVEY SUMMARY



A total of 73 surveys were returned. 19 from the Wickliffe meeting, 50 from the Cairo meeting, and 4 from the Local Officials meeting.

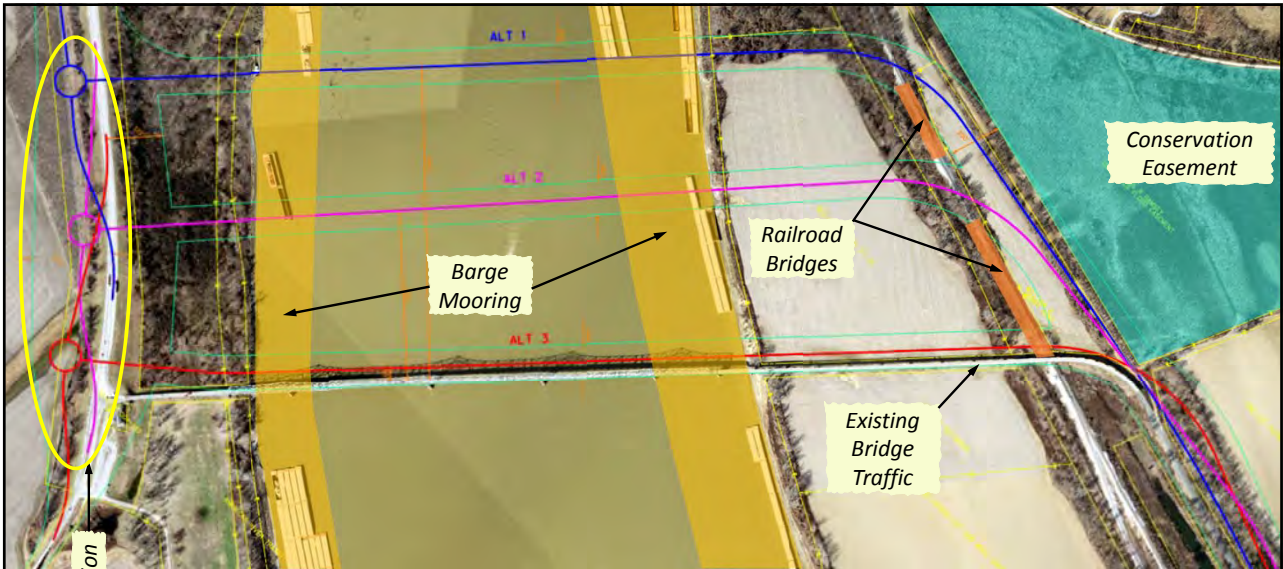
## QUESTIONS?





## ROADWAY ALIGNMENTS AND TYPICAL SECTIONS

47

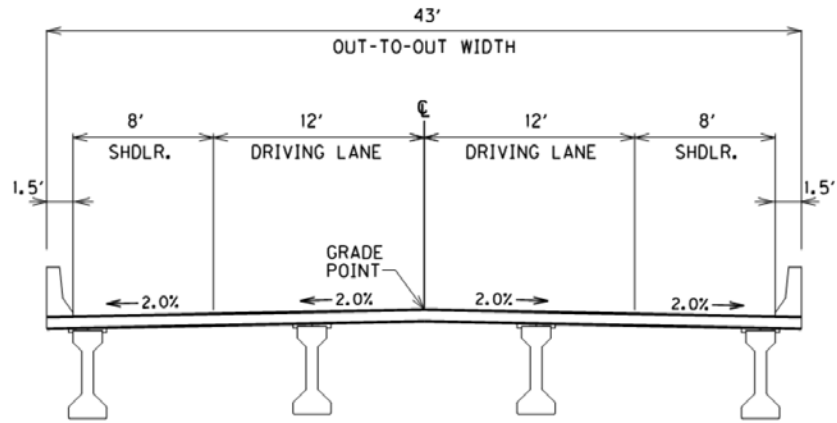


## Alignment Alternatives and Constraints



48

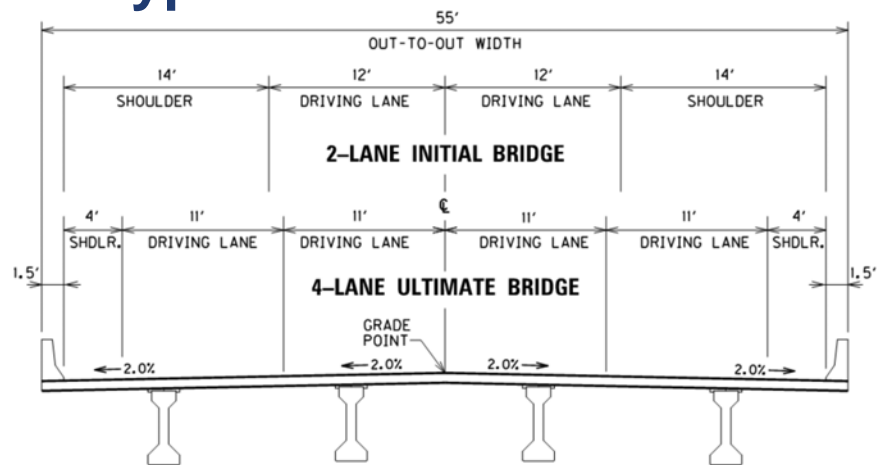
## 2 Lane Typical Section



**PROPOSED 40' 2-LANE BRIDGE**



## 4 Lane Typical Section



**PROPOSED 52' 2-LANE INITIAL  
4-LANE ULTIMATE BRIDGE**



## ALIGNMENT DISCUSSION (small groups)

### Items to think about:

- Pros and Cons of the presented alignments?
- Pros and Cons of the presented typical sections?
- Do you have a preference of one alternative over another?
- What are your main concerns?



51

QUESTIONS?



52



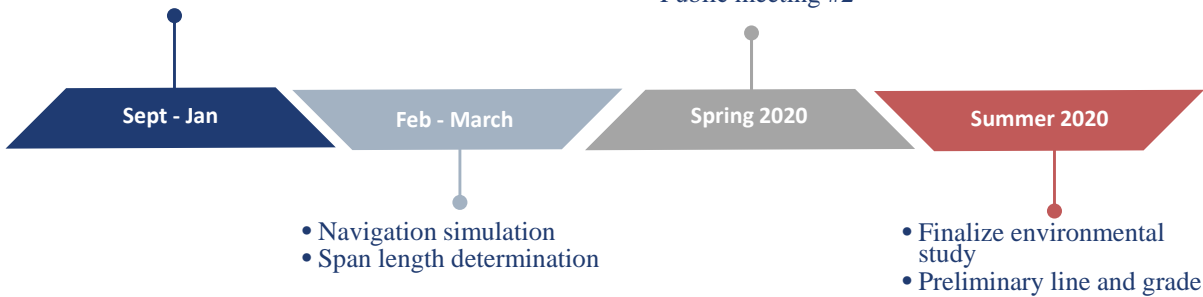


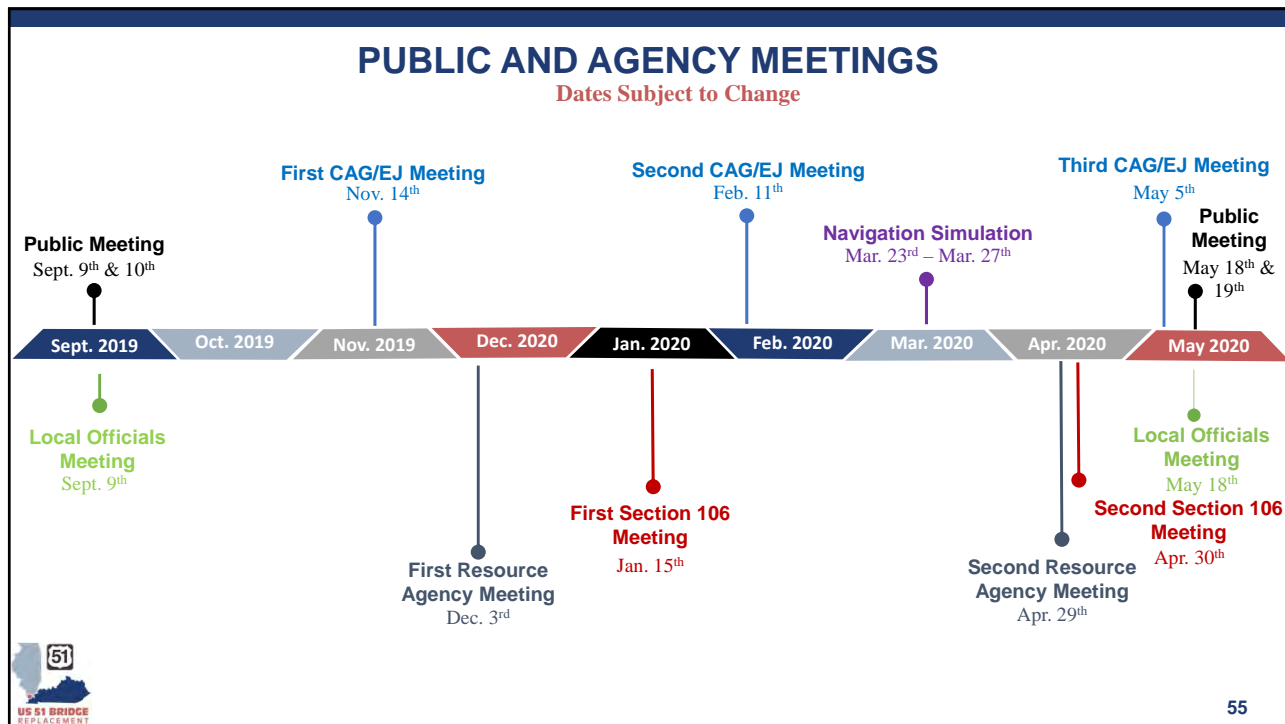
**UPCOMING MEETINGS AND PUBLIC INFORMATION**

**SCHEDULE AND OBJECTIVES**






- Obtain field survey data
- Analyze existing structure
- Investigate alignment
- Typical section study
- Hydraulics analysis

- Evaluate alternatives
- Public meeting #2





## FOR MORE INFORMATION

-  Website  
<https://us51bridge.com/>
-  Facebook  
<https://www.facebook.com/KYTCDistrict1/>
-  Citizen's Guide to NEPA  
<https://ceq.doe.gov/docs/get-involved/Citizens Guide Dec07.pdf>
-  Section 106 Manual  
<https://www.epa.gov/sites/production/files/2015-08/documents/r1-nhpa-cultural-resources-manual.pdf>
-  Attend Future Meetings

**US 51 BRIDGE REPLACEMENT**

56

# QUESTIONS?





# Appendix B

# Handouts

**US 51 BRIDGE REPLACEMENT  
CITIZENS ADVISORY AND  
ENVIRONMENTAL JUSTICE GROUP  
CODE OF CONDUCT**



1. Everyone will be allowed to state their opinions, ideas, and questions without interruption. All ideas will be heard, and differences will be respected.
2. Feedback will be given directly, openly, and concisely. Responses will be specific and focused on the task at hand.
3. Time will be used efficiently. Meetings will begin and end on time, and attendees will arrive on time. Comments, questions and concerns will keep in mind time constraints and avoid sidetracking, personality conflicts, and hidden agendas.
4. Members of the Citizens Advisory and Environmental Justice Group will attend all meetings. If the member cannot attend, they will provide a representative to attend in their absence.
5. Cell phones will be set to silent and only answered in emergency cases.

**CITIZENS ADVISORY AND  
ENVIRONMENTAL JUSTICE GROUP  
MEETING #1 - AGENDA  
NOVEMBER 14, 2019**



1. Roll Call
2. Why are we here?
  - a. Project Goals
  - b. Role of the CA/EJ Group
3. Where are we in the project development process?
  - a. What is covered under NEPA?
  - b. What is Section 106?
  - c. Community Context Activity\*
4. How did we get here?
  - a. Planning study evaluation criteria and conclusions
  - b. Recommended alternative
5. What have we been up to?
  - a. Purpose and Need of the project\*
  - b. Existing Conditions
  - c. Group Activity\*
  - d. Project Goals\*
6. What did we hear from the public?
7. Roadway alignments and typical sections
  - a. Group Activity\*
8. Upcoming meetings and public information
9. Open Discussion
10. Adjourn

\* Handouts

# REVALIDATION OF PROJECT GOALS

## Project goals will be considered in:

- Project decisions
- Alternative development
- The range of alternatives developed
- Screening criteria
- Alternative comparison and evaluation

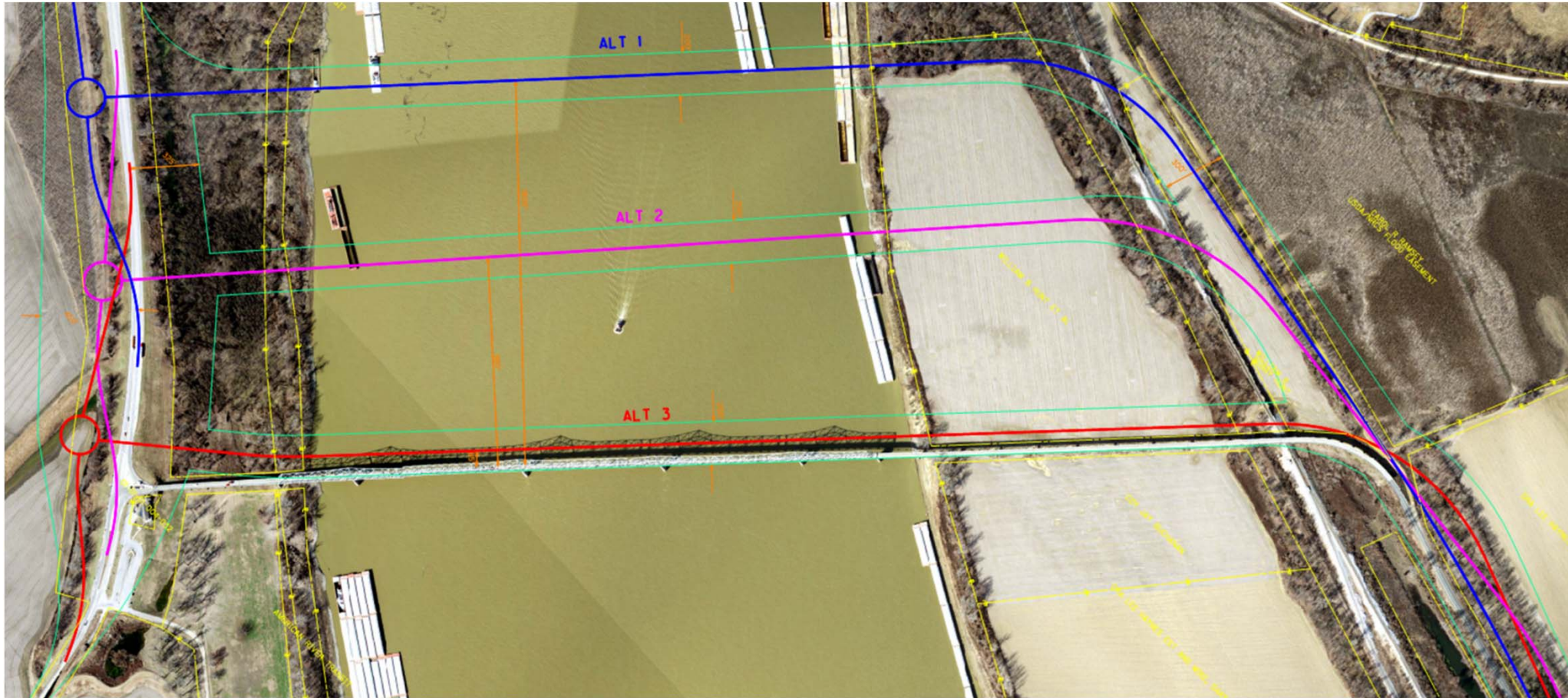
**“The purpose of the US 51 Bridge Project is to improve cross river mobility between Wickliffe, Kentucky and Cairo, Illinois, by addressing the safety and reliability issues caused by the narrow lane widths, lack of shoulders and tight curve of the existing bridge and its approaches.”**

*The purpose is a statement of the issue to be resolved, and the need provides data to support this statement. (What is the problem, and why is it a problem?)*

**Secondary Goals describe other issues that need to be resolved within the project not directly related to transportation. Examples include:**

- Satisfy U.S. Coast Guard requirements
- Support local freight routes
- Constructible solution
- Minimize costs
- Minimize disruption to Wickliffe and Cairo during construction
- Minimize impacts to:
  - Tourism
  - Human and Natural Environment
  - Historic Resources
- Support consistent travel time between Wickliffe and Cairo
- Decrease delay due to incidents on the bridge
- Connectivity to bicycle facilities

# DRAFT ALIGNMENT ALTERNATIVES - NOVEMBER 14, 2019







# Appendix C

# Community Context

# Activity



## Community Context Group Activity

What are the locations of important community activity areas and focal points?

Cairo - High School  
Wickliffe - Nut Wounds - Court House - Jefferson Fort

Where do people in the community obtain important services (healthcare, education, etc.)?

Cairo - Community Health & Emergency Services  
Kentucky CARE Health Dept. Ballard School  
Cairo School District

Describe your ideal vision of the Cairo/Wickliffe area in 20 years. How could transportation help make your vision a reality?

Cairo more economic development  
to be more connected with other cities

Wickliffe to be more than a pass through  
develop more destination stops

How might changes to the bridge negatively or positively impact you, your family and the community? **What else has changed in the community?**

Positive Bring more business & allow  
more transportation to connect to this  
Region. Allow for more economic growth  
and productivity



# Community Context Group Activity

What are the locations of important community activity areas and focal points?

KY - Fort Jefferson Park including Cross & walking trail  
Wickliffe Mounds State Park

IL - Magnolia Manor, Fort Defiance, Thebes Court House, Horseshoe Lake  
Kentucky Lake

Where do people in the community obtain important services (healthcare, education, etc.)?

Healthcare - Small clinics in Cairo & Ballard County

Education - SEMO, Murray, SCC, WKCTC

Describe your ideal vision of the Cairo/Wickliffe area in 20 years. How could transportation help make your vision a reality?

---

---

---

---

---

---

---

---

---

---

How might changes to the bridge negatively or positively impact you, your family and the community? **What else has changed in the community?**

---

---

---

---

---

---



## Community Context Group Activity

What are the locations of important community activity areas and focal points?

Local boating companies employees (citizens)

Fort Defiance Park

Where do people in the community obtain important services (healthcare, education, etc.)?

Health Center, Cairo Illinois, Health Dept, Cairo

Danvers Ky (colleges/hospitals)

Shawnee Community College Ext.

Describe your ideal vision of the Cairo/Wickliffe area in 20 years. How could transportation help make your vision a reality?

More businesses would interest Cairo, Illinois

How might changes to the bridge negatively or positively impact you, your family and the community? **What else has changed in the community?**

Positive = safer,

Negative -



## Community Context Group Activity

What are the locations of important community activity areas and focal points?

Fort Jefferson Welcome Center

Fort Defiance

Wickliffe Mounds

Where do people in the community obtain important services (healthcare, education, etc.)?

Cairo residents go to Paducah for healthcare

Older residents reluctant to cross bridge because it's narrow

Farming equipment crossing

Describe your ideal vision of the Cairo/Wickliffe area in 20 years. How could transportation help make your vision a reality?

Visibility and traffic

Economic growth

Strong river industry

How might changes to the bridge negatively or positively impact you, your family and the community? **What else has changed in the community?**

Could affect negatively barge fleetings operations

Traffic impacts during construction

Increased traffic/usage



## Community Context Group Activity

What are the locations of important community activity areas and focal points?

- Portal to Access everyday living necessities -  
groceries, gas

Where do people in the community obtain important services (healthcare, education, etc.)?

- Travel to Kentucky from Cairo for continued  
education, Dr.'s visits

Describe your ideal vision of the Cairo/Wickliffe area in 20 years. How could transportation help make your vision a reality?

- In 20 years our vision of the Cairo/Wickliffe area will have more services and transportation
- Increase in population
- increase in economic development
- Provide jobs

How might changes to the bridge negatively or positively impact you, your family and the community? **What else has changed in the community?**

- Positively - Safer traveling accommodations
- Negative impact may be construction



# Community Context Group Activity

What are the locations of important community activity areas and focal points?

Library Fort Defiance  
Custom Hill 8th St.  
Wickliffe Mounds  
St. Mary's Park  
MEM Wheeler  
St. Gofferson Cross

Where do people in the community obtain important services (healthcare, education, etc.)?

Clinic - Cairo  
Shawnee Extension  
Family Counseling  
Clinic - Wickliffe

Describe your ideal vision of the Cairo/Wickliffe area in 20 years. How could transportation help make your vision a reality?

Riverport  
Tourism  
Jobs  
Water & Solar Energy

How might changes to the bridge negatively or positively impact you, your family and the community? **What else has changed in the community?**

Positively  
Could increase population  
New housing - elderly - tiny homes



## Community Context Group Activity

What are the locations of important community activity areas and focal points?

In Cairo, the most important community activity areas are Cairo High School, St. Mary's Park, Magnolia Manor, Riverbore, The Cairo Public Library, the area churches,

Where do people in the community obtain important services (healthcare, education, etc.)?

Mostly at the Cairo Mega Clinic near the interstate

Describe your ideal vision of the Cairo/Wickliffe area in 20 years. How could transportation help make your vision a reality?

More jobs, affordable housing, improved services - gasoline, restaurants, grocery, pharmacy stores.

How might changes to the bridge negatively or positively impact you, your family and the community? **What else has changed in the community?**

At least 20% of the current faculty at Cairo School district commutes from Wickliffe, Barlow and Paducah the bridge is a vital link for the community and schools. Additionally, with almost no resources (stores etc) the bridge is vital for access.





# Community Context Group Activity

What are the locations of important community activity areas and focal points?

---

---

---

---

Where do people in the community obtain important services (healthcare, education, etc.)?

Wickliffe, <sup>ky</sup> Cairo, Ill

---

---

---

Describe your ideal vision of the Cairo/Wickliffe area in 20 years. How could transportation help make your vision a reality?

---

---

---

---

---

---

---

---

How might changes to the bridge negatively or positively impact you, your family and the community? **What else has changed in the community?**

Negative impact would be losing prime farming income due to taking away property.

Positive impact would be easier <sup>+ safer</sup> access ~~crossing over~~ to Cairo & Wickliffe

---

---



# Community Context Group Activity

What are the locations of important community activity areas and focal points?

Wickliffe, Cairo, CHARLESTON, SIKKISTON,  
CAPE GIRARD JAY

Where do people in the community obtain important services (healthcare, education, etc.)?

WORK PURPOSES

Describe your ideal vision of the Cairo/Wickliffe area in 20 years. How could transportation help make your vision a reality?

ROAD

How might changes to the bridge negatively or positively impact you, your family and the community? **What else has changed in the community?**

PROPERTY



## Community Context Group Activity

What are the locations of important community activity areas and focal points?

Fort Defiance Park  
Cairo & Wickliffe Waterfront  
Mounds, The Cross

Where do people in the community obtain important services (healthcare, education, etc.)?

Cape Girardeau, Educach

Describe your ideal vision of the Cairo/Wickliffe area in 20 years. How could transportation help make your vision a reality?

We hope that the new bridge construction will positively impact the Wickliffe economy.

How might changes to the bridge negatively or positively impact you, your family and the community? **What else has changed in the community?**

Directly affects my business.  
Concerned for the impact of landowners  
we want the bridge construction we  
are concerned ~~on~~ over the property impact.  
For example: what will happen to bridge after  
new bridge is completed. (old)



# CONTEXT

- Ft Jefferson, Wick Mounds
- River Tourism Opportunities
- Magnolia, horseshoe Lake
- Accessibility
- TOURISM
- Employment
- Groceries / Services
- Cross River Reliance
- Vital
- GRAIN / SHIPPING
- MEDICAL

- 7th class mid term

## VISION

- River Tourism Opportunities
- Accessibility

## Changes

- + Accessibility
- + Improved Reliability
- Closure during Construction
- + Jobs

+150 Trucks/day  
Expansion 2-3x



# Appendix D

## What Has Changed?

### Activity



## What Has Changed Since 2014?

Typical jobs of community members? Has the economy changed over time?

Individuals from Cairo typically find work in KY or MO. Typical jobs include agriculture, factory or healthcare. Conversely, 25% of the school districts workforce commutes from KY to IL.

Typical commuting patterns for people working in the community? How have they changed over time?

Cairo to KY work, food, clothing, pharmacy recreation. KY to IL agriculture and recreation.

How has the bridge served you/your family and the community in the past versus now?

The bridge has been a vital link between the two communities.

Are you seeing expanding opportunities and does the project provide any additional opportunities? **What else has changed?**

Yes, the reopening of the paper mill, the expansion of work in fish processing, at the chicken factory, and the explosion of hemp farming has created significant employment opportunities on the KY side. Additionally, a new ~~port~~ Port will be built on the Mississippi side of the River in Cairo.



## What Has Changed Since 2014?

Typical jobs of community members? Has the economy changed over time?

PaperMill Reopened - Hiring - Wickliffe  
River, Grain  
SEMI traffic

Typical commuting patterns for people working in the community? How have they changed over time?

People still work using bridge both ways  
traffic

How has the bridge served you/your family and the community in the past versus now?

VITAL, crucial, Necessity

Are you seeing expanding opportunities and does the project provide any additional opportunities? **What else has changed?**

PaperMill reopening in Wickliffe  
same as above





# What Has Changed Since 2014?

Typical jobs of community members? Has the economy changed over time?

more trucks over bridge

Cairo is a food desert there are no stores that have fresh produce - The bridge is a link for food, jobs and more and Wickliffe residents have a shorter route to Saint Louis via traveling current

Projects  
Fisheries  
Hemp  
Paper mill  
Grain moving

Typical commuting patterns for people working in the community? How have they changed over time?

Some Ky Residents access jobs via the current bridge and vice versa Cairo residents use the existing bridge as a work route - to get to jobs this bridge is vital

How has the bridge served you/your family and the community in the past versus now?

My mother currently lives in Ky and works in Cairo - Many workers are employed in Cairo's River Trade (Barge-deck hands) and Phoenix Paper mill employs many ppl from Illinois

Are you seeing expanding opportunities and does the project provide any additional opportunities? What else has changed?

JOBS have changed - Business opportunities are not as abundant - Cairo did employ many key workers at SNORES - Burkhardt's - and other places - Economy could get a boost from this new Bridge (In Cairo)



# What Has Changed Since 2014?

Typical jobs of community members? Has the economy changed over time?

Cairo lost housing/families  
Wickliffe Paper mill opened back  
Grocery stores in both areas closed  
Tourism - Ky Lake  
Fishing, Hemp plants, Grainery/raem

Need 4 LANE!

Typical commuting patterns for people working in the community? How have they changed over time?

Cape, Sikeston, Wickliffe - Plant Business jobs / Agriculture is major  
Truck traffic hauling wood

4 LANE

How has the bridge served you/your family and the community in the past versus now?

Linked our families, jobs, Recreation, way to shopping, Restaurants, any form of life basically (Daily life)  
Connection to 3 States!

4 LANE

Are you seeing expanding opportunities and does the project provide any additional opportunities? **What else has changed?**

Ship Bridge Needs to come SOONER than LATER - Critical for GROWTH here!

Compliments Riverport  
Paper mill EXPANSION

Needs to be a 4 lane! The size of vehicles have increased RVs pulling Boats, ATVs, <sup>WIDE LOAD</sup> Semi's, etc.  
MORE TRUCK TRAFFIC coming  
HWY 60 EXPANSION



## What Has Changed Since 2014?

Typical jobs of community members? Has the economy changed over time?

River Industry

Agricultural

Manufacturing

Cairo <sup>Wickliffe</sup> closing of grocery stores

Typical commuting patterns for people working in the community? How have they changed over time?

Unchanged

How has the bridge served you/your family and the community in the past versus now?

In the past more economic activity in Cairo.

Served people by providing access to services, goods & jobs.

Are you seeing expanding opportunities and does the project provide any additional opportunities? **What else has changed?**

River industry expanding

Wickliffe paper mill has expansion plans \$200m investment



## What Has Changed Since 2014?

Typical jobs of community members? Has the economy changed over time?

Lack of jobs in Cairo due to local business closing - loss of population due to housing crisis

Typical commuting patterns for people working in the community? How have they changed over time?

- 85% of Cairo residents who are employed work in KY or MO (outside of Cairo)
- there's public transportation available but some do not go out of state

How has the bridge served you/your family and the community in the past versus now?

Daily living necessities - gas groceries entertainment - healthcare

Are you seeing expanding opportunities and does the project provide any additional opportunities? **What else has changed?**

- Work force development
- Accessibility to more environment resources
-



## What Has Changed Since 2014?

Typical jobs of community members? Has the economy changed over time?

Reopening of Paper Mill  
Port Authority opportunities in Cairo and  
Wickliffe Also growth of Hemp Shipping  
and Shipping of Asian Carp

Typical commuting patterns for people working in the community? How have they changed over time?

Teachers having to travel to different  
cities or states to fill positions  
Housing issues Cairo  
more housing needed to cover plant workers

How has the bridge served you/your family and the community in the past versus now?

(Same) as always

Are you seeing expanding opportunities and does the project provide any additional opportunities? **What else has changed?**

More Space Need on Hwy Bridge to  
promote growth for future 2 lane  
Adequate But Not for Growth "Under Growth"



## What Has Changed Since 2014?

Typical jobs of community members? Has the economy changed over time?

- Ky - Economy suffers when bridge is closed.
- Ky - Phoenix paper mill workers, logging truck drivers, electricians.
- IL - Farmers, Union workers, Granary workers
- IL - Bangre, CGB, ADM Granary's

Typical commuting patterns for people working in the community? How have they changed over time?

- Teacher shortage will cause interstate traveling across the bridge.
- Bangre workers

How has the bridge served you/your family and the community in the past versus now?

It has been a reliable source of transportation for both rural and urban communities.

Are you seeing expanding opportunities and does the project provide any additional opportunities? **What else has changed?**

Opening of a river port in Cairo will draw business from KY and its communities.



## What Has Changed Since 2014?

Typical jobs of community members? Has the economy changed over time?

Cairo - Illinois - lost grocery, pharmacy, fuel services.  
Housing Authority closed, due to declining economy.

Typical commuting patterns for people working in the community? How have they changed over time?

Citizens of Cairo have to travel for work, education, grocery needs.

How has the bridge served you/your family and the community in the past versus now?

Travel for healthcare, shopping, fuel,

Are you seeing expanding opportunities and does the project provide any additional opportunities? **What else has changed?**

Expanding opportunities, hoping for revenue and new opportunities into Cairo. ~~and~~ Failing economy in Cairo has changed.







# Appendix E

# Alignment Activity



# Alignment Discussion

## Alternative 1

Pros	Cons
Curve would not be as sharp	disturbing river fleeting
Closest to Cairo.	Close to conservation
Near on the pier would river navigation	higher costs

## Alternative 2

Pros	Cons
Curve not as sharp	disturbed river fleeting
Straight across	close to conservation
	boat navigation for pier

## Alternative 3

Pros	Cons
closer to existing bridge would not impact fleeting	transition to illinois side



### 2-Lane Typical Section

Pros	Cons
cheaper costs	

### 4-Lane Typical Section

Pros	Cons
<del>no</del>	more expensive two lane road at end of bridge

Do you have a preference of one alternative over another?

Alt. 3

---

---

---

---

---

What are your main concerns?

---

---

---

---

---

---



# Alignment Discussion

## Alternative 1

Pros	Cons
Smaller main structure	Conservation Easment
Potentially less Furling needed	Building up 51 elevation

## Alternative 2

Pros	Cons
	River Mooring interference

## Alternative 3

Pros	Cons
	Close proximity to original structure



### 2-Lane Typical Section

Pros	Cons
<i>Pros &amp; Cons would cancel each other out.</i>	

### 4-Lane Typical Section

Pros	Cons
<i>Future Growth</i>	<i>Extra Cost</i>

Do you have a preference of one alternative over another?

*If ALT #2 saves enough money to pay for a 4 lane, go with it.*

What are your main concerns?

*Keeping current 51 bridge open during the construction of the new bridge.*



# Alignment Discussion

## Alternative 1

Pros	Cons
More Room to Negotiate Turn	Gets over into Flood easement close to RR

## Alternative 2

Pros	Cons
More Room For Turn	Gets over into Flood easement. RR Issue

## Alternative 3

Pros	Cons
Close to existing less change in Topography	Gets over into Flood plain



### 2-Lane Typical Section

Pros	Cons

### 4-Lane Typical Section

Pros	Cons

Do you have a preference of one alternative over another?

---

---

---

---

---

What are your main concerns?

---

---

---

---

---

---



# Alignment Discussion

## Alternative 1

Pros	Cons

## Alternative 2

Pros	Cons

## Alternative 3

Pros	Cons

We are good with any!





### 2-Lane Typical Section

Pros	Cons

### 4-Lane Typical Section

Pros	Cons

Do you have a preference of one alternative over another?

No we are good with any of them!

What are your main concerns?

Not building a big enough Bridge! And being able to witness it in our lifetime. 😊



# Alignment Discussion

## Alternative 1

Pros	Cons
Closer to Cairo	longer commute on bridge

## Alternative 2

Pros	Cons
least congested on Ky side	Railroad interference

## Alternative 3

Pros	Cons
familiarity widening of curve	round about for trucks



### 2-Lane Typical Section

Pros	Cons
expanded shoulder	over growth in bridge traffic from port
	truck traffic increase

### 4-Lane Typical Section

Pros	Cons
safety growth	expense

Do you have a preference of one alternative over another?

---

---

---

---

What are your main concerns?

---

---

---

---

---



# Alignment Discussion

## Alternative 1

Pros	Cons
<del>least impact to river industry</del>	Impact to river industry
<del>least environmental impact</del>	<del>Unknown</del> <sup>More</sup> environmental impacts
	too close to existing dry dock
	most cost

## Alternative 2

Pros	Cons
	Impact to river industry
	More environmental impacts

## Alternative 3

Pros	Cons
least impact to river industry	Construction issues due to nearness to existing bridge
least environmental impact	
easier to connect E Giro Rd	
least cost	



### 2-Lane Typical Section

Pros	Cons
lower Cost	
Adequate capacity	

### 4-Lane Typical Section

Pros	Cons
Capacity	Cost
long term 4-lane of US 60	

Do you have a preference of one alternative over another?

Prefer Alt 3

What are your main concerns?



# Alignment Discussion

## Alternative 1

Pros	Cons
less disruption to land owners	

## Alternative 2

Pros	Cons

## Alternative 3

Pros	Cons
OR this one	



### 2-Lane Typical Section

Pros	Cons
	Future expansion + growth of community

### 4-Lane Typical Section

Pros	Cons
Handle future River Port Traffic	

Do you have a preference of one alternative over another?

---

---

---

---

What are your main concerns?

---

---

---

---

---



# Alignment Discussion

## Alternative 1

Pros	Cons

## Alternative 2

Pros	Cons

## Alternative 3

Pros	Cons
PREFER THIS ALTERNATIVE, ALTHOUGH IT WILL BE THROUGH OUR PROPERTY, DEPENDING ON HOW MUCH LAND IS TAKEN.	





### 2-Lane Typical Section

Pros	Cons

### 4-Lane Typical Section

Pros	Cons

Do you have a preference of one alternative over another?

---

---

---

---

---

What are your main concerns?

---

---

---

---

---

---



# Alignment Discussion

## Alternative 1

Pros	Cons

## Alternative 2

Pros	Cons
limited impact	
on moorings and	
nice connection	
to highway on IL	
side	

## Alternative 3

Pros	Cons
least amount of	
impact on Railroads	
or Moorings	



## 2-Lane Typical Section

Pros	Cons

## 4-Lane Typical Section

Pros	Cons

Do you have a preference of one alternative over another?

---

---

---

---

What are your main concerns?

Whatever design lends itself to the least ~~amount~~ amount of time when the KY to IL connectivity will closed. The three designs are all great because they are so close to the existing bridge.

# Alignments

## PRO'S

- ALT 3 - closer
- Keep it open most.
- Shorter / cost eff.
- 2L BRIDGE is much wider than exist

Add: Constraints to the  
South of bridge  
Exit Distance  
Toll Plaza

## CONS

ALT 1 getting close to  
W.P.S. Facility